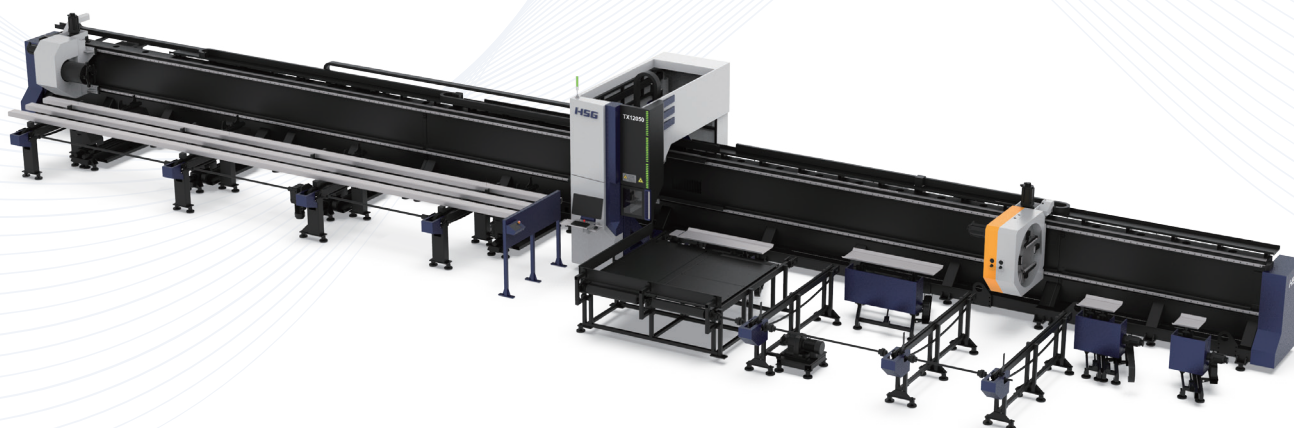




Cutting | Bending | Welding | Automation



# TX

❖ 3+1 Twin-chuck Tube Laser Cutting Machine ❖

## Company Culture

### MISSION

Intelligent manufacturing changes future

### VALUES

Customer-focused and employee-based

### VISION

Become a respectable enterprise in the global metal forming equipment field

## Company Profile



19

Global Branches



100+

Countries Covered



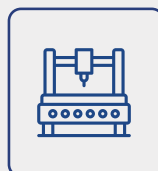
4

Manufacturing Bases



30+

Global Service Centers



8,000+

Annual Capability



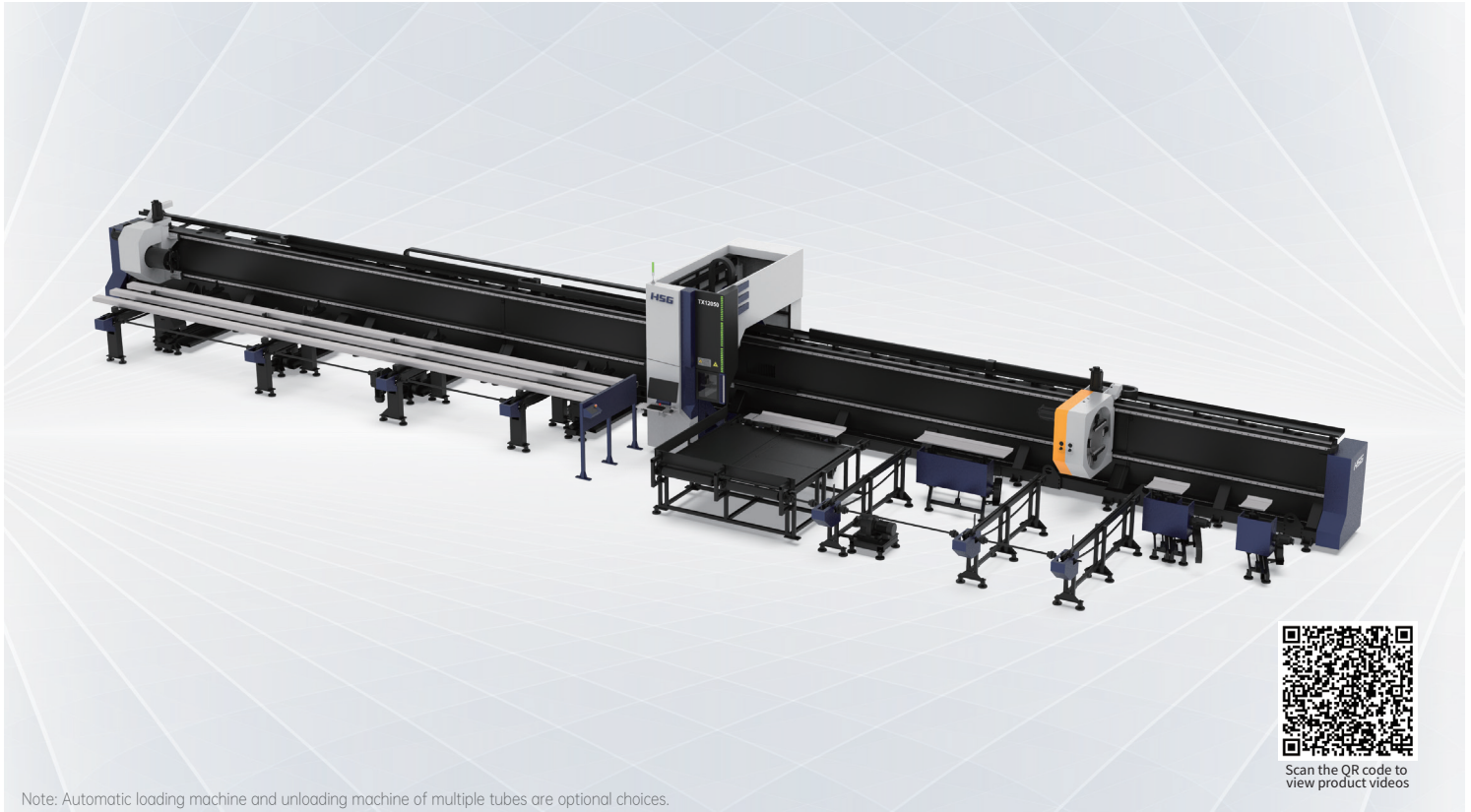
135,000m<sup>2</sup>

Occupied Area



# TX 6000-20000W

## 3+1 Twin-chuck Tube Laser Cutting Machine



Note: Automatic loading machine and unloading machine of multiple tubes are optional choices.



Scan the QR code to view product videos

## Technical Parameters

Technical Parameter	TX9036II-6	TX12036II-6	TX12050-9
Power	6000-20000W	6000-20000W	6000-20000W
Rotating Speed of Chucks	60r/min	60r/min	40r/min
Max. Linkage Speed	60m/min	60m/min	60m/min
Max. Linkage Acceleration	0.6G	0.6G	0.3G
X/Y-axis Positioning Accuracy	±0.05mm/m	±0.05mm/m	±0.05mm/m
X/Y-axis Repositioning Accuracy	±0.05mm	±0.05mm	±0.05mm
*Tailing Length	0mm	0mm	0mm
Cutting Capacity	Round tubeΦ40 - Φ360mm Square tube□40*40 - □250*250mm Rectangular diagonal≤360mm	Round tubeΦ40 - Φ360mm Square tube□40*40 - □250*250mm Rectangular diagonal≤360mm	Round tubeΦ50 - Φ500mm Square tube□50*50 - □350*350mm Rectangular diagonal≤500mm
Weight of Single Tube	1200kg	1200kg	1500kg
Overall Dimensions(L*W*H) with Loading Racks	18000*5000*3500mm	21000*5000*3500mm	26000*5500*3800mm

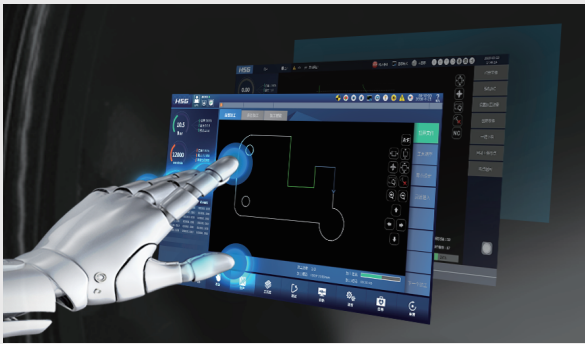
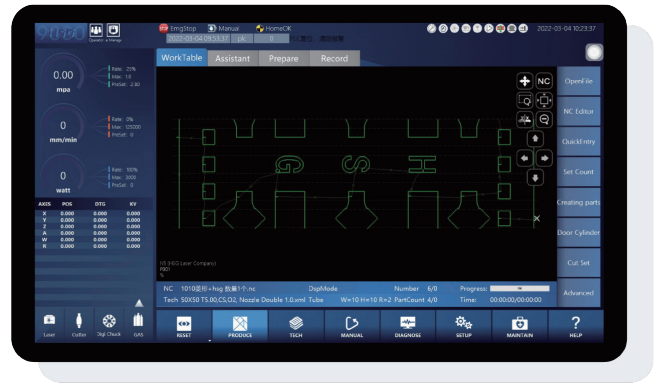
\*Only when the nesting material is reasonable can be achieved

\* Machine appearance, technical parameters, function description, data comparison shown in this page are from HSG in-house laboratory.  
All testing results and experimental data shall be subject to real machine.



## High Speed and Intelligent for Better Processing

- High Speed and Precise  
High-speed data transmission without time delay and strong positional energy control.
- High rotational Speed and Air Velocity  
Bus system and servo motor reduce unproductive time.



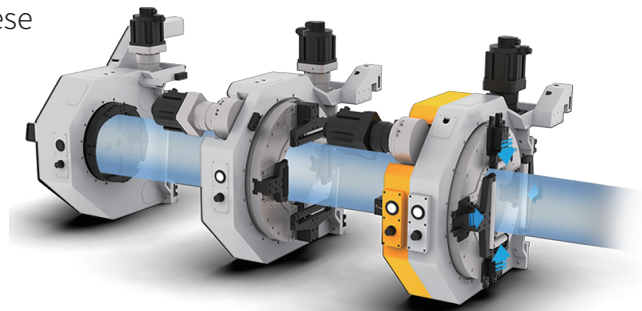
## X9800 Bus-based Tube Cutting Control System

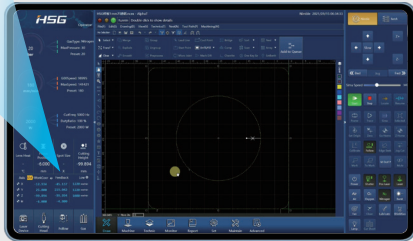
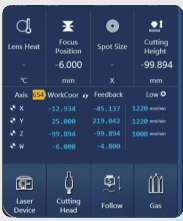
- Simple Interface  
Clear interface is convenient for users operating and shows cutting data in real time to save time and costs.
- Functional Integration Control  
A number of core functions are showed centrally on the interface to reduce operating steps and users can easily learn to operate.



## 3+1 Twin-chucks Clamping Cutting Technique

- The chucks are self-developed by HSG Laser and have got Chinese patent for invention. They not only address prevailing problems faced by two, three and other four chucks, but also offer global users heavy tube cutting solutions beyond expectation.
- Combine C3 and C4 chuck together with synchronous rotation and moving.
- Have functions of tube clamping, supporting and correction.
- Move at full stroke to break through existing technical barrier, that is, tubes loaded must be as long as machine body.





## Powerful Functions Make You Never Spend Time Worrying

- Component Real-time Monitoring and Maintenance Alert  
All components are detected in real time to ensure the stable use and the system is equipped with maintenance alert for careful component management



## Follow-up Supporting Plate as Unloading Device Database (Optional)

- Follow-up turning plates are used for unloading  $\leq 6000\text{mm}$  long tube and protect it from scratch.



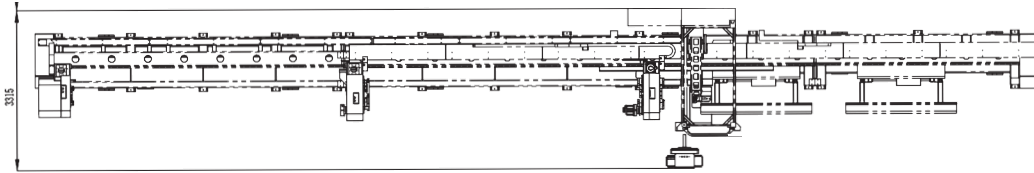
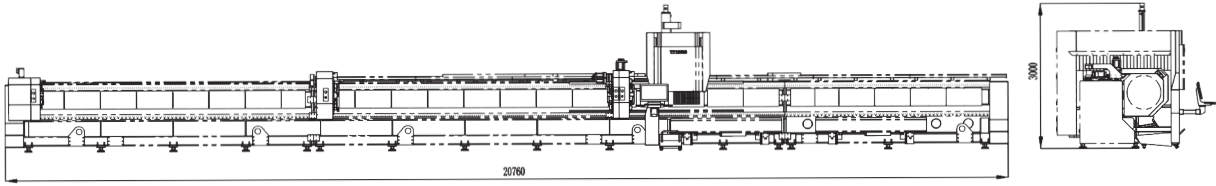
## Tube Splicing Technology

- The operating control offers 50+ kinds of tube splicing patterns, for convenience of subsequent welding, such as splicing of male and female head of square tube, 90° arc splicing, splicing of round tube tee, splicing of cut-through holes, 45° splicing of hexagon, splicing of angle iron and channel steel, etc.

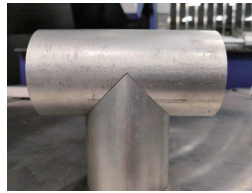
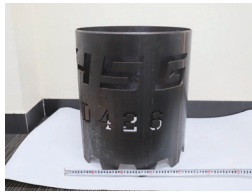
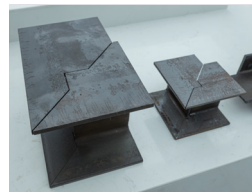
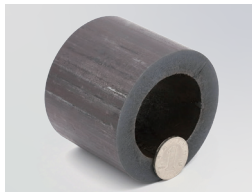


## Machine Foundation

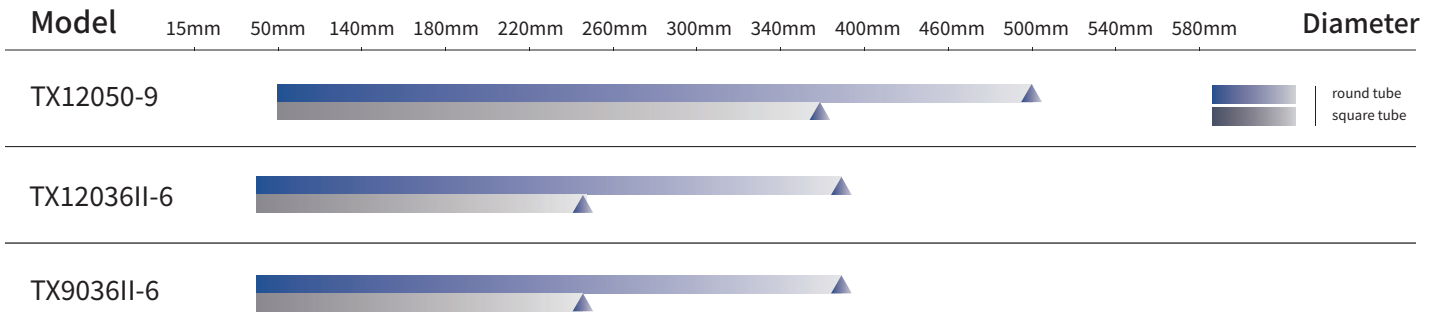
\*The marked size has about 10mm error  
 \*Pictures of TX12036II-6 are for reference only and subject to actual dimensions.  
 \*The dimensions of the standard configuration of the machine are for reference only.  
 Please refer to the three views of the order configuration for the actual machine dimensions.



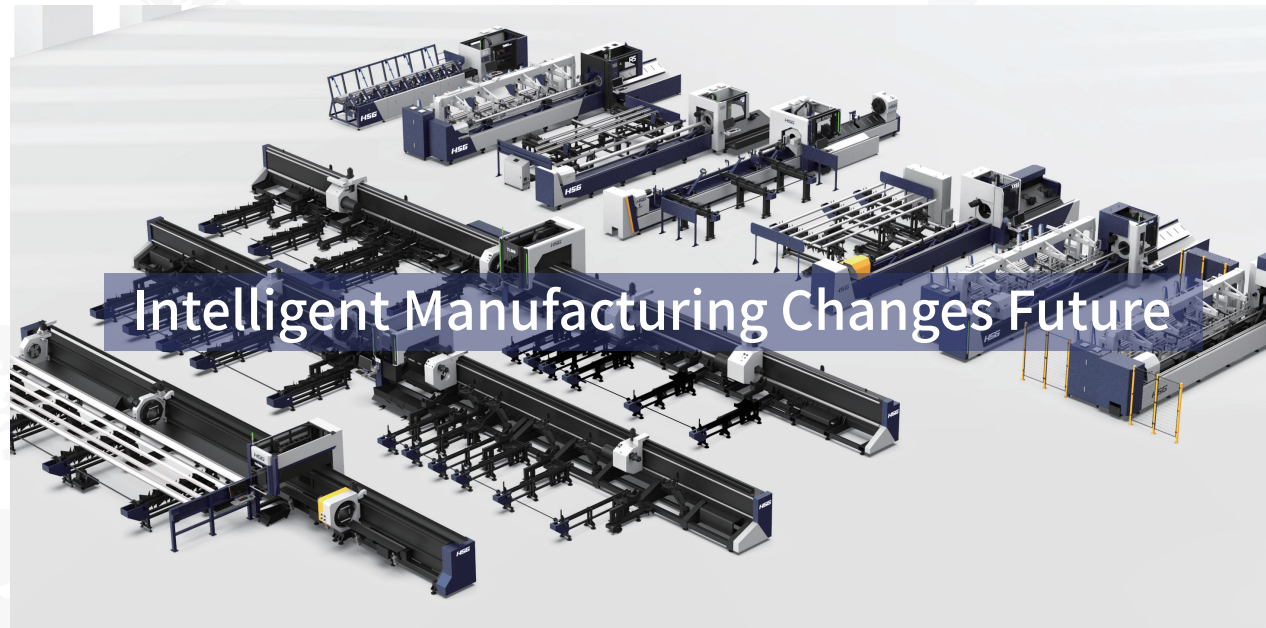
## Cutting Samples



## Cutting Capacity



The actual machines shall prevail and above data & pictures are only for reference.



## Intelligent Manufacturing Changes Future



**As a global enterprise, HSG sticks to providing professional and convenient service support to customers at home and board**



### Professional Training

Multiple technical training service and free operation training for customers and dealers in time



### Efficient Support

Humanistic service model, online services and 7\*24 hotline to offer solutions and assistance



### Optimized Transport

Multi-channel transport solutions and professional transport solution team will provide various transport cases for to satisfy the demand of customers and save transports fees



### Sufficient Accessories

Highly efficient accessories delivery service, multiple network inventory jointly responds to accessories demand to shorten customer's waiting times and accelerate production



### Careful Services

Domestic door-to-door service and free proofing, global 100+dealers provide efficient and convenient services



Intelligent Manufacturing Changes Future



Website



Facebook



Youtube

Headquarters Add.: No. 4, Anye Road, Shunjiang Community Industrial Park,  
Beijiao Town, Shunde District, Foshan, Guangdong, China  
Website: [www.hsglaser.com](http://www.hsglaser.com)  
Email: [info@hsglaser.com](mailto:info@hsglaser.com)  
Tel: +86 757-66833906