



Cutting | Bending | Welding | Automation



TL730S

▪ Flagship '4+1' Full-track Heavy Duty Tube Beveling Fiber Laser Cutting Machine ▪

Company Culture



MISSION

Intelligent manufacturing changes future



VALUES

Customer-focused and employee-based



VISION

Become a respectable enterprise in the global metal forming equipment field

Company Profile



19

Global Branches



100+

Countries Covered



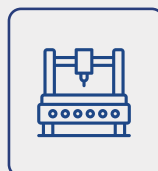
4

Manufacturing Bases



30+

Global Service Centers



8,000+

Annual Capability



135,000m²

Occupied Area



TL730S 6000-20000W

Flagship '4+1' Full-track Heavy Duty Tube Beveling Fiber Laser Cutting Machine



Technical Parameters

Technical Parameter	TL730S
Power	6000-20000W
Rotating Speed of Chucks	45m/min
X/Y-axis Positioning Accuracy	±0.1mm/m
X/Y-axis Repositioning Accuracy	±0.1mm
*Tailing Length	0
Cutting Capacity	Round tube $\Phi 120 - \Phi 715\text{mm}$ Square tube $\square 120-500\text{mm}$ Rectangular tube $\leq 715\text{mm}$ and Side length $\leq 120-500\text{mm}$
Weight of Single Tube	4000kg
Overall Dimensions(L*W*H) with Loading Racks	38000*6500*5000mm
The range of pipe material	3000-16000mm

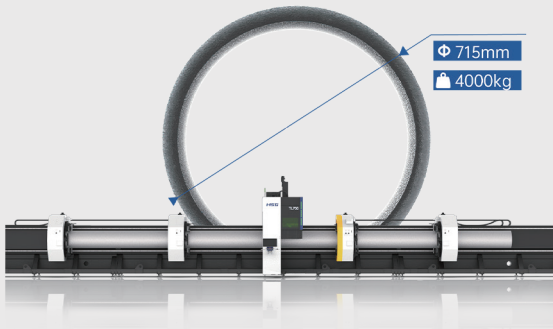
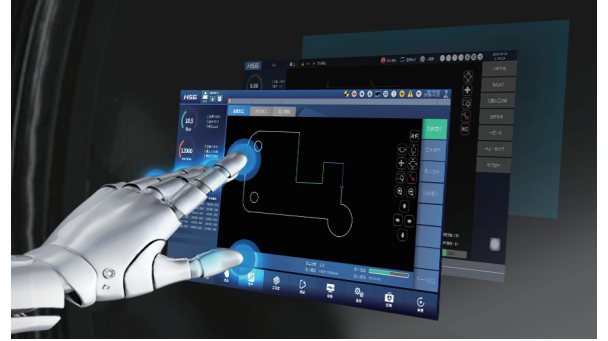
*Only when the nesting material is reasonable can it be achieved

* Machine appearance, technical parameters, function description, data comparison shown in this page are from HSG in-house laboratory.

All testing results and experimental data shall be subject to real machine.

HSG-X Bus Control System

- Simple Interface
Clear interface is convenient for users operating and shows cutting data in real time to save time and costs.
- Functional Integration Control
A number of core functions are showed centrally on the interface to reduce operating steps and users can easily learn to operate.



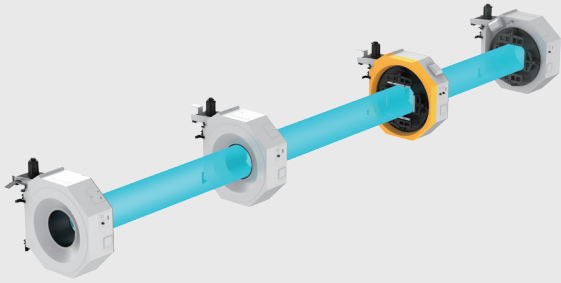
Max Heavy-duty Tube Processing Ability The machine can process tube diameters in 715mm.

- The machine can process tube diameters in 715mm.
- Tube Length: 16m
- Weight per Tube: 4000kg

Innovate 4+1 Chucks Structure

- C3 chuck and C4 chuck are combined to achieve double support.
- There are 4 points clamping at loading section and the load bearing improved significantly.
- Clamping near the cutting area at 2 points which the accuracy is effectively guaranteed.



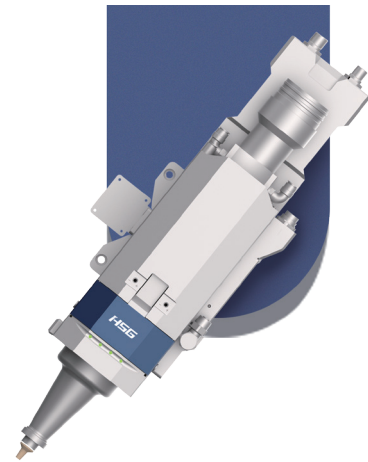


Intelligent digital chuck

- The chuck and the control system can communicate with each other to achieve full closed-loop control.
- * The machine has functions in jaw state detection, tube size measurement and adaptive adjustment of clamping force.

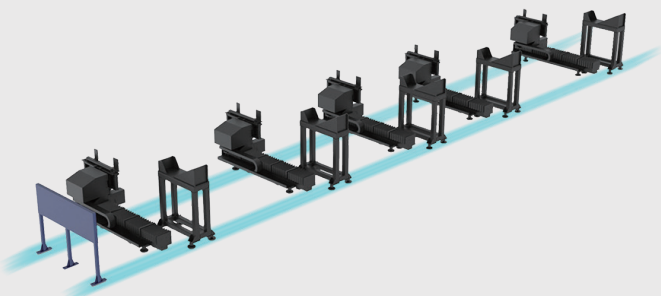
Beveling Processing

- Beveling tube cutting head to achieve 0-45° beveling cutting.



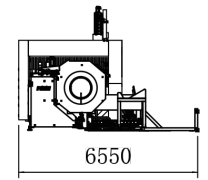
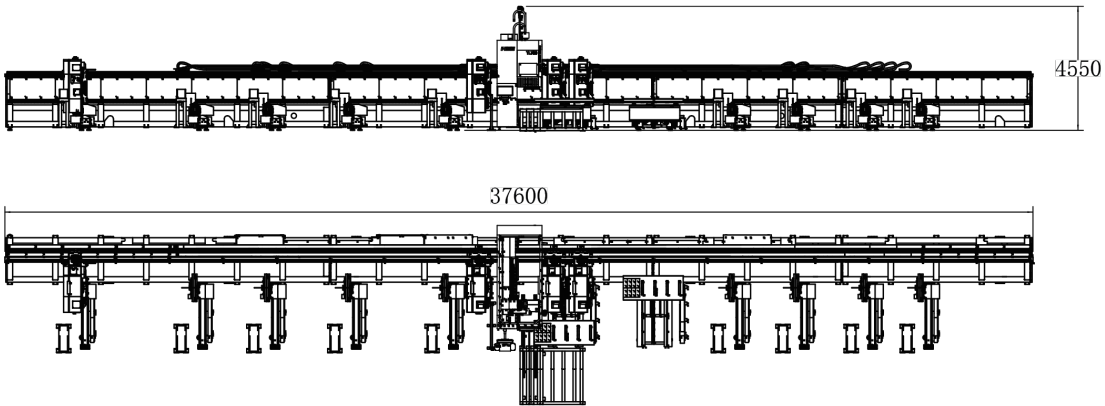
Standard automatic loading and unloading mechanism for heavy tubes

- Realize automatic loading and unloading of heavy tubes, saving labor and reducing the risk of accidents that may occur with manual loading.
- Materials are loaded simultaneously while unloading, eliminating waiting time and improving production efficiency.



Machine Foundation

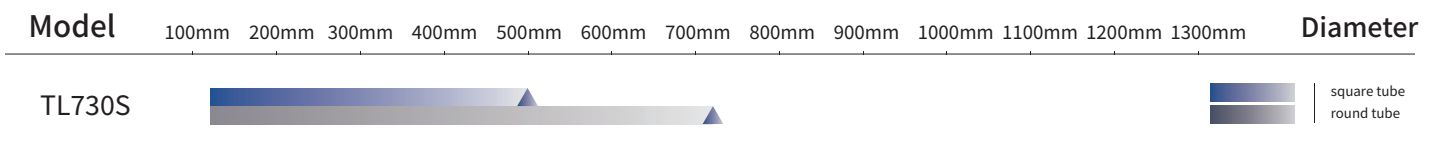
*The marked size has about 10mm error



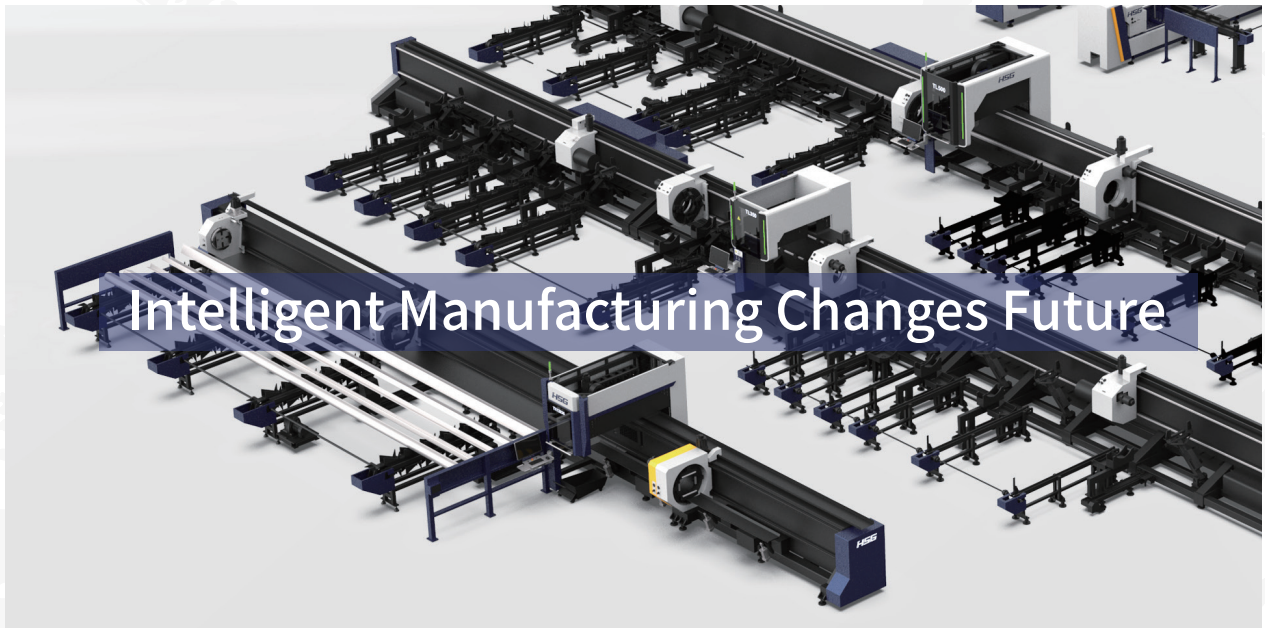
Cutting Samples



Cutting Capacity



The actual machines shall prevail and above data & pictures are only for reference.



Intelligent Manufacturing Changes Future



As a global enterprise, HSG sticks to providing professional and convenient service support to customers at home and board



Professional Training

Multiple technical training service and free operation training for customers and dealers in time



Efficient Support

Humanistic service model, online services and 7*24 hotline to offer solutions and assistance



Optimized Transport

Multi-channel transport solutions and professional transport solution team will provide various transport cases for to satisfy the demand of customers and save transports fees



Sufficient Accessories

Highly efficient accessories delivery service, multiple network inventory jointly responds to accessories demand to shorten customer's waiting times and accelerate production



Careful Services

Domestic door-to-door service and free proofing, global 100+dealers provide efficient and convenient services



Intelligent Manufacturing Changes Future



Website



Facebook



Youtube

Headquarters Add.: No. 4, Anye Road, Shunjiang Community Industrial Park,
Beijiao Town, Shunde District, Foshan, Guangdong, China
Website: www.hsglaser.com
Email: info@hsglaser.com
Tel: +86 757-66833906