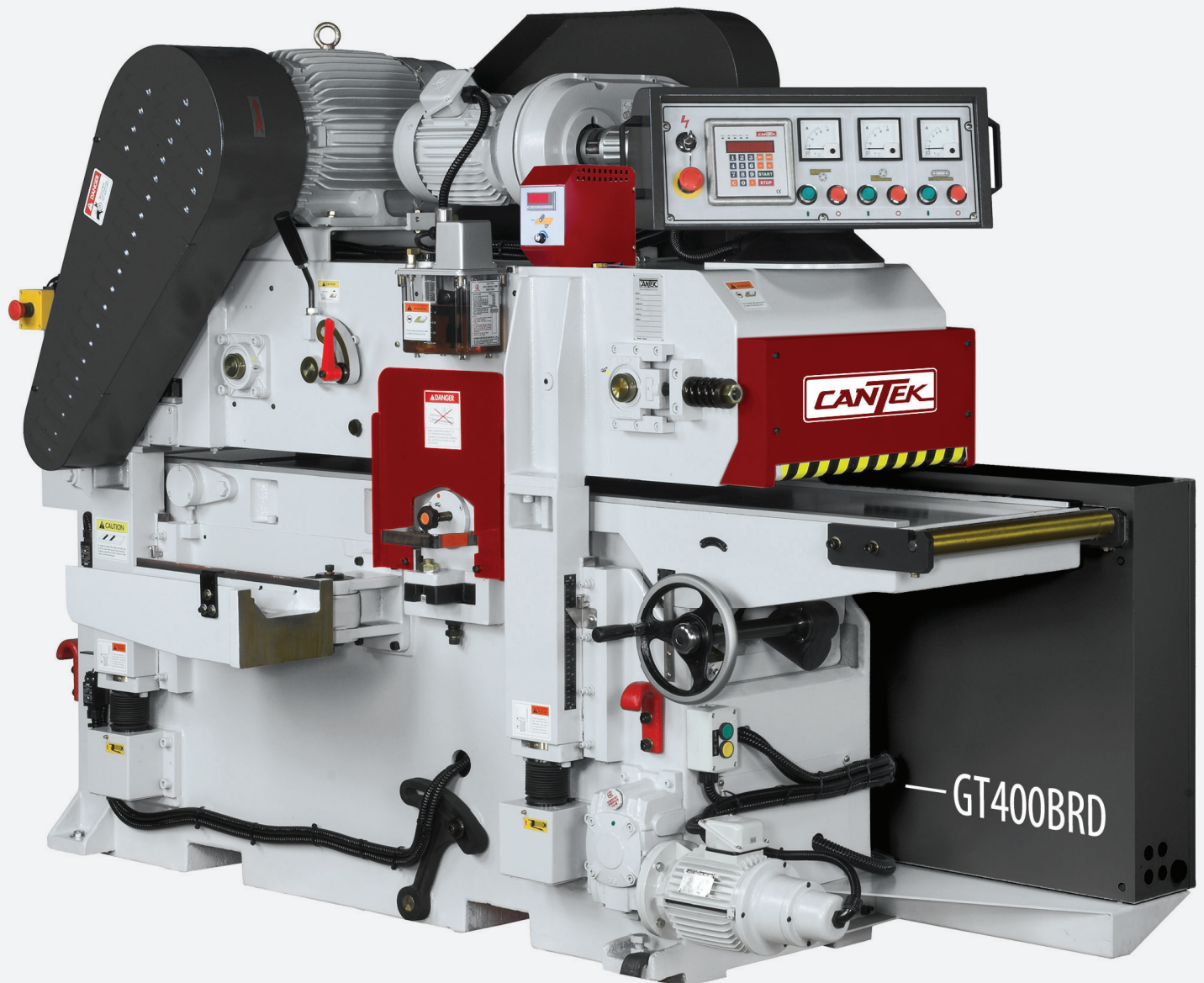


**CANTEK**

# GT400BRD

16" DOUBLE SURFACE PLANER



# GT400BRD | 16" DOUBLE SURFACE PLANER

## Plane your material efficiently in a single pass.

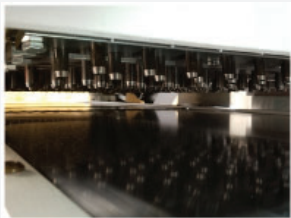
The Cantek GT400BRD 16" Double Surface Planer has a robust cast-iron body for industrial planing day in and day out. The spiral insert knife cutterheads produce a smooth planed finish with maximum stock removal. The material is passed over the bottom head with a spring-loaded pin feed system while the infeed bed is adjustable to determine how much material is removed. The final thickness is keyed in the digital control and the top head & feed assembly automatically move in place.



Inverter controlled variable planing speed



Ergonomic swiveling control panel



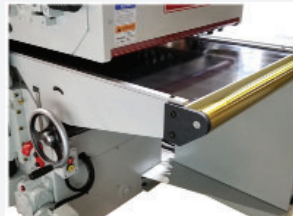
Spring loaded pin conveyor system



Removeable bottom spiral insert knife cutterhead



Auto conveyor lubrication system



Convenient side handwheel for adjusting infeed bed with mechanical readout



Powerful chain feed drive



Sectional chip breaker, sectional infeed roll before top planer head

## Key Advantages.

- Spring loaded conveyor pin system ensures material is passed over the bottom cutterhead to resulting in a flat and uniform board prior to planing to thickness on the top head
- Spiral insert knife cutterheads with two-sided solid carbide knives produce a smooth finish with increased stock removal capacity and extremely quiet operation
- Heavy-duty cast-iron machine body and table for vibration free cutting
- Digital electronic thickness adjustment in INCH and MM (Inch = 0.001" / mm = 0.01mm resolution) for precise thickness control
- Cutterheads are spiral insert type with six (6) rows of carbide inserts
- (2) driven and (1) idle bed roll for superior feeding of even difficult material
- Swiveling control panel for more ergonomic access to machine controls
- Inverter variable speed control with feed speeds from 23 to 65 FPM
- Easy to access external handwheel adjustment of infeed bed
- Hard chromed worktable for high wear resistance
- Auto lubrication to conveyor chain, central lubrication for dovetail elevation guideways
- Section chipbreaker and sectional feed roller before top cutterhead
- Rubber outfeed top roller to prevent chip marking
- Over thickness safety shut-off bar across infeed.
- Ammeter for each motor on control panel to monitor motor load

## Specifications.

Maximum working width	16"
Maximum working thickness	6.7"
Minimum workpiece length	10"
Minimum working thickness	0.315"
Bottom jointing head motor	10 HP
Top planing head motor	15 HP
Feed motor	2 HP
Table elevation motor	½ HP
Cutterhead diameter	4"
Knife information	30mmx12mmx1.5mm (60 knives/head)
Cutterhead speed	5000 RPM
Feed speed (variable)	23~65 FPM
Dust collection	2 @ 5" diameter
Table size	19" x 86"
Machine dimensions (LxWxH)	86.6" x 35.43" x 66.93"
Net weight	4180 Lbs.
Electrical information	460/3/60 = 33 amps 230/3/60 = 66 amps